



# SOUTHERN CALIFORNIA HORTICULTURAL SOCIETY

*Where passionate gardeners meet to share knowledge and learn from each other.*

socalhort.org

NEWSLETTER

August 2021

## OUR NEXT IN-PERSON MEETING

**Thursday, August 12**

Doors Open: 7:00 p.m.

Plant Forum at 7:10 p.m. \*

Announcements at 7:25 p.m. \*

**Program at 7:30 p.m. \***

**\* Live-Streaming**

**Register to view live at:**

**[www.socalhort.org](http://www.socalhort.org)**

## SCHS WELCOMES NEW MEMBERS

*July brought us the following:*

**Beverly Alison**

**Darrell Banta**

**Gina Bush**

**Bridget Lee**

**Guillaume Lemoine**

**Wendy Talaro**

*We appreciate your support!*

## CONNECT WITH SCHS

Please engage with us online!

### FIND US AT:

[www.socalhort.org](http://www.socalhort.org)

[www.facebook.com/pg/socalhort](https://www.facebook.com/pg/socalhort)

[www.instagram.com/socalhort](https://www.instagram.com/socalhort)



*All membership options  
are also listed on our website.*

## IN THIS ISSUE

August Program and  
Membership News ..... 1

July Program Recap, CITG  
Report and Garden Share .... 2

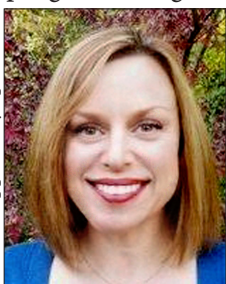
Horticultural Happenings, Live  
Events and SCHS Archives .... 3

Upcoming Programs and  
SCHS Contact info. .... 4

## Gardening Tools of the Trade

On August 12, the SCHS is excited to meet in person for the first time since February of 2020. Joining us to present a program on gardening tools will be

Photo supplied by speaker.



horticulturist and educator Jill Morganelli. She will be reviewing her favorite tools that have been tried and tested and that she describes as “Arboretum tough”. Known to many of our members from her ten years as Horticultural Supervisor at the Los Angeles County Arboretum and Botanic Garden, Morganelli has much hands-on experience to share. She is currently instructing the Gardening Practices and Techniques class in the UCLA Extension Horticulture and Gardening Certificate Program where she is also on the Horticulture Advisory Board.

Morganelli knows that having the right equipment for any job will give you the best chance for success, and

will therefore be discussing a variety of gardening tools and their uses, providing practical advice derived from first-hand knowledge. During her program she will also share insights on how to properly use and care for our garden tools to keep them at peak performance. She will also be answering questions afterward, so our guests will have a chance to get specific about their own tool preferences, complaints or dilemmas.

Having spent her career focusing on building healthy ecosystems that sustain physically and spiritually strong floras, Morganelli’s presentation will show us how having the right tools and knowing how to use them will assist us in building strong, healthy gardens at home. We hope you will join us for this practical program that’s sure to touch on something of interest for every gardener. Stop by in person at Friendship Auditorium or register online at [www.socalhort.org](http://www.socalhort.org) to attend our simultaneous Zoom presentation. “See” you there!

Sabine Steinmetz

## MEMBERSHIP NEWS

### “LIVE” AUGUST SCHS MEETING

The August meeting will be an in-person event, as well as live-streaming for those who prefer to watch from home. We will be practicing safety protocols for everyone’s protection, not be serving refreshments, and – per the L.A. County Department of Public Health – masks will be mandatory, regardless of vaccination status. In addition to being able to interact with our speaker, we will also be resuming other activities, so we hope you will consider stopping by.



### RAFFLE & PLANT SALES RETURN

As well as enjoying a live presentation and demo, we are also looking forward to spending money on garden goodies!

For our raffle, Steve Gerischer is donating a selection of gardening tools from his personal collection - featuring over 25 pairs of pruning shears. For the price of a ticket, you could go home with a tool purchased from familiar makers such as Wilkinson Sword, Gardena and Sandvik, as well as unusual brands from Japan, China and Europe. All are new and unused, and most are in their original packaging.

And for those of us who have missed going to plant sales during the last year, John Schoustra and Aprille Curtis will be offering a fresh selection of plants for sale - just ahead of fall planting season!



## 2021 HORTICULTURIST OF THE YEAR AWARD PROGRAM

**Thursday, September 23**

*Please join us for a virtual presentation posthumously honoring horticultural notables Bill Baker, John Dourley and Virginia Hayes.*

**FULL DETAILS COMING IN NEWSLETTER & ONLINE**

### Follow SCHS online at:

[www.socalhort.org](http://www.socalhort.org)

[www.facebook.com/pg/socalhort](https://www.facebook.com/pg/socalhort)

[www.instagram.com/socalhort](https://www.instagram.com/socalhort)

## JULY WEBINAR RECAP • CITG REPORT • MONTHLY GARDEN SHARE

On July 8, the SCHS hosted Joanna Glovinsky, the founder of Fruitstitute, a Los Angeles-based fruit tree care and education service, to present a webinar on the specialized care of fruit trees. Her program focused on the biological differences between commercially cultivated fruit tree species as compared to trees growing in residential and urban environments, and the implications this has for management.

Glovinsky provided a history of fruit growing culture – most specifically grafting practices – to lead into her lecture on modern commercial growing practices that dominate fruit tree growing today and how these impact home orchardists. Grafting is used to propagate plants grown for specific traits such as vigor, pest resistance, size, flavor, etc. Commercial growers must look at fruit trees as a commodity in terms of land value measured by yield and profitability. Therefore, the orcharding industry

establishes the standards for the management of growing fruit, which is misaligned with the needs of home gardeners growing fruit trees in a residential landscape. Therefore, home grown trees require different management techniques to be healthy and productive.

Keeping in mind that as gardeners we must establish the parameters for what we want from our fruit trees (crop yield, size, shade, etc.), there are good management practices that most trees have in common. The most important of these is properly siting the tree when it is planted. If there is not enough light, or space for root expansion is limited, or there is too much competition for resources from adjacent plantings, the tree will not thrive. Once the tree has been optimally sited, management practices will aid in keeping it vigorous and productive, beginning with maintaining soil health. Fruit trees require more nutrient-rich soil than ornamentals, as they are heavy feeders. In addition to a regular fertilizing schedule, applications of compost and organic mulch are good ways to ensure that the soil's nutrients will be consistently replenished. The latter will also help retain moisture in the soil as most species also require

regular irrigation for good fruit production. Annual or seasonal pruning must be done to maintain a manageable size and keep a balanced branch structure, remove dead wood, "lift" heavy branches, and open the canopy. And finally, because fruit is heavy, thinning the crop is mandatory to prevent branches from breaking, and because unchecked over-bearing (especially true for stone fruit) can result in decreased yields in subsequent years.

It is Glovinsky's mission to educate home growers in the practices of good fruit tree management as she has found there to be a great need for this, especially in urban environments. She established Fruitstitute as a service to teach people about the specialized care that all fruit trees need to grow great fruit, and how they can be successful in this endeavor. (Learn more at [www.fruitstitute.com](http://www.fruitstitute.com).)

✂ Sabine Steinmetz

*To watch this program on YouTube, click the following link:*

<https://www.youtube.com/watch?v=83zLhoGCQJQ>

### COFFEE IN THE GARDEN RECAP – FRUIT TREE PRUNING

As a follow-up to Glovinsky's lecture, the SCHS also booked her for our first "live" event of 2021, as part of our Coffee In The Garden (CITG) series. Glovinsky, along with two of her Fruitstitute team members, Mad and Capri, assisted attendees with hands-on orange tree pruning in Pasadena's Arlington Gardens on July 11.



Prior to working on the trees, Glovinsky spoke about how and when to prune citrus, tools needed (hand pruners, loppers, and a pruning saw) and gave a demo of good tool maintenance. She also reiterated that good cultural habits including proper watering, feeding and mulching, (as well as pruning) would result in healthier, productive fruit trees.

Attendees then broke into small groups and worked on select trees with guidance from the Fruitstitute team, who also



supplied all of the tools. Removing any dead wood, opening up the interior, thinning to improve form and lift branches, and aesthetics were all factors for the teams to consider as they



decided on how, what and where to prune. In addition to participating in a hands-on learning experience, afterwards the participants were able to enjoy light refreshments and admire the measurable improvements resulting from their work.

The SCHS board was pleased to offer this new type of CITG event, and look forward to scheduling more as soon as conditions permit. We hope you'll consider joining us next time.

✂ Photos & text by Sabine Steinmetz

Please visit the SCHS Instagram and Facebook pages for more photos from this event.

### SCHS MONTHLY GARDEN SHARE

*Settle into August with light garden chores and a cool beverage.*

- Continue deep watering trees and supplementally hand-watering containers and bedding plants.
- Keep on harvesting/enjoying your veggies and herbs!
- Prune back summer-dormant California native perennials.
- Start removing dead or dying plants now for pest control and to reduce fall clean-up tasks.
- Check your compost pile to see if it's getting dried out - turn, mist and shade it if necessary.
- Catch up on your garden reading and begin thinking about what to plant in autumn...

✂ Sabine Steinmetz

*Learn more about SCHS and check us out online at:*  
[www.facebook.com/pg/socalhort](http://www.facebook.com/pg/socalhort) • [www.instagram.com/socalhort](http://www.instagram.com/socalhort) • [www.socalhort.org](http://www.socalhort.org)

## AUGUST HORTICULTURAL HAPPENINGS

### COVID-19 UPDATES FOR LOCAL GARDEN VENUES

Venues open at press time are marked  and  for those that are online only.

Organizations and venues are offering more events and classes, both online and in person, while maintaining safety protocols, limited attendance and hours.

**Please continue to check with your favorites for updated info if you are planning a visit.**


 **CALIFORNIA BOTANIC GARDEN**  
(formerly RANCHO SANTA ANA)  
1500 N. College Ave., Claremont 91711  
909.625.8767 [www.calbg.org](http://www.calbg.org)

 **CALIFORNIA NATIVE PLANT SOCIETY**  
SAN GABRIEL MOUNTAINS CHAPTER  
1750 N. Altadena Dr., Pasadena 91107  
818.398.5420 [www.cnps-sgm.org](http://www.cnps-sgm.org)

 **CALIFORNIA NATIVE PLANT SOCIETY**  
L.A. / Sta Monica Mtns Chapter / Sepulveda Garden Ctr  
16633 Magnolia Blvd., Encino 91436  
818-782-9346 [www.lasmmcnps.org](http://www.lasmmcnps.org)

 **COASTKEEPER GARDEN**  
1560 E. Santiago Cyn. Rd., Orange 92869  
714.850.1965 [www.coastkeeper.org](http://www.coastkeeper.org)

 **DESCANSO GARDENS**  
1418 Descanso Drive, La Canada 91011  
818.949.7980 [www.descansogardens.org](http://www.descansogardens.org)

 **EATON CANYON NATURE CENTER**  
1750 N. Altadena Dr., Pasadena 91107  
626.398.5420 [www.ecnca.org](http://www.ecnca.org)

 **FULLERTON ARBORETUM**  
1900 Associated Road, Fullerton 92831  
657.278.3407 [www.fullertonarboretum.org](http://www.fullertonarboretum.org)

 **HUNTINGTON BOTANICAL GARDENS**  
1151 Oxford Road, San Marino 91108  
626.405.2100 [www.huntington.org](http://www.huntington.org)

 **LOS ANGELES COUNTY ARBORETUM**  
301 N. Baldwin Ave., Arcadia 91007  
626.821.4623 [www.arboretum.org](http://www.arboretum.org)

 **NATURAL HISTORY MUSEUM OF L.A.**  
900 Exposition Blvd., Los Angeles 90007  
213.763.3466 [www.nhm.org](http://www.nhm.org)


 **RANCHO LOS ALAMITOS**  
6400 E. Bixby Hill Rd., Long Beach 90815  
562.431.3541 [www.rancholosalamitos.org](http://www.rancholosalamitos.org)

 **RANCHO LOS CERRITOS**  
4600 Virginia Road, Long Beach 90807  
562.206.2040 [www.rancholoscerritos.org](http://www.rancholoscerritos.org)

 **SAN DIEGO BOTANIC GARDEN**  
230 Quail Gardens Dr., Encinitas 92024  
760.436.3036 [www.sdbgarden.org](http://www.sdbgarden.org)

 **SOUTH COAST BOTANIC GARDEN**  
26300 Crenshaw Blvd., Palos Verdes 90274  
310.544.1948 [www.southcoastbotanicgarden.org](http://www.southcoastbotanicgarden.org)

 **THEODORE PAYNE FOUNDATION**  
10459 Tuxford St., Sun Valley 91352  
818.768.1802 [www.theodorepayne.org](http://www.theodorepayne.org)

 **UC RIVERSIDE BOTANIC GARDENS**  
900 University Ave., Riverside 92521  
951-784-6962 [www.gardens.ucr.edu](http://www.gardens.ucr.edu)

 *Yvonne Savio*

To see more events as they're posted, check: [www.gardeninginla.net/submit-your-garden-events](http://www.gardeninginla.net/submit-your-garden-events).

## LINKS TO UPCOMING EVENTS & WEBINARS

*Please check with individual organizations for class fees & details*

**California Garden & Landscape History Society**  
- Upcoming Online Events -  
[www.cglhs.org/upcoming-events](http://www.cglhs.org/upcoming-events)

**California Native Plant Society**  
- Upcoming Online & In-Person Events -  
[www.cnps.org/event/virtual-native-plant-events](http://www.cnps.org/event/virtual-native-plant-events)

**Waterwise Community Center,  
Chino Basin Water Conservation District**

- Upcoming Waterwise Activities -  
[www.cbwcd.org/328/Programs-Events](http://www.cbwcd.org/328/Programs-Events)  
- Upcoming Gardening Online Workshops -  
<https://www.cbwcd.org/354/Free-Workshops>





## SCHS VIDEO ARCHIVES - LEARNING OPPORTUNITIES

*Our growing video archive of Speakers, Plant Forums, Events and more  
is becoming a valuable horticultural resource covering an increasing variety of topics.*

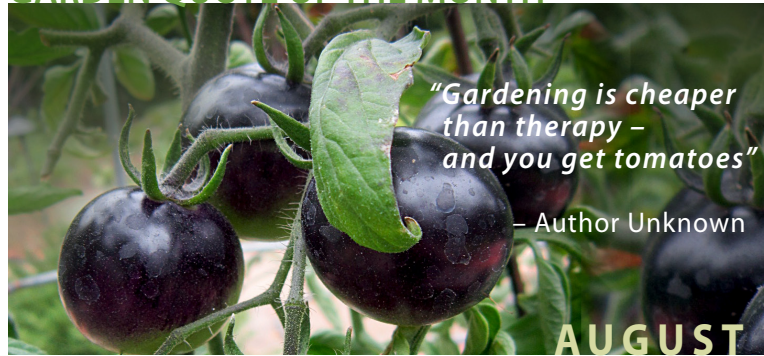
Watch SCS on YouTube at: <https://www.youtube.com/channel/UCYYBy88Q361IQVnV69qgmGg>



In-person meetings will be held at Friendship Auditorium, 3201 Riverside Drive, Los Angeles CA 90027, unless otherwise noted. Meetings will also be available simultaneously online via Zoom.

-  August 12 - Jill Morganelli, instructor with the UCLA Extension Horticulture Program will speak on gardening tools  
**IN PERSON**
-  Sept. 23 - 2021 Horticulturist of the Year Award Program  
**WEBINAR** *Please note event date is the 4th Thursday, with no other meetings in September. - EVENT DETAILS TBA -*
-  October 14 - Johanna Silver, former Sunset editor and author will talk about Growing Weed in The Garden  
**VENUE TBA**
-  November 11 - Program details being finalized  
**VENUE TBA**

## GARDEN QUOTE OF THE MONTH



Southern California  
Horticultural Society  
P.O. Box 94476  
Pasadena CA 91109-4476

NEWSLETTER August 2021

John Schoustra - President, Field-Trip Committee, Finance Committee, Plant Raffle, Plant Sales at meetings  
 Steven Gerischer - Vice President, Oral History Committee, PR  
 Laura Bauer - Treasurer, Finance Committee, Website Committee, HOTY Event Committee, Voicemail  
 Pat Steen - Membership Secretary, Recording Secretary, Field Trip and Coffee-in-the-Garden Committees, Greeter  
 Carol Aronson - Field Trip & Coffee-in-the-Garden Committees, Program Committee  
 Carol Bornstein - Program Committee  
 Aprille Curtis - Social Media Committee, Plant Forum supplies  
 Fleur Nooyen - Program Committee  
 Steven Ormenyi - Finance Committee  
 Yoav Paskowitz - Finance Committee, Oral History Committee, Website Committee, Newsletter Copy Editor  
 Yvonne Savio - Horticultural Happenings, Field Trip and Coffee-in-the-Garden Committees  
 Lili Singer - Board Nomination Committee, PR, Archives, Social Media Committee  
 Sabine Steinmetz - Newsletter Editor, Sharing Secrets, Graphic Design  
 Jill Vig - Coffee-in-the-Garden Committee, Oral History Committee, Special Projects

Connect with us at: 818-567-1496 • [socalhort.org](http://socalhort.org) • [facebook.com/socalhort](https://facebook.com/socalhort) • [instagram.com/socalhort](https://instagram.com/socalhort)

Newsletter Editor: Sabine Steinmetz

Contributors: Jill Morganelli, Yvonne Savio

**Next deadline: Monday, August 16** (for September newsletter)  
*Please contribute an article or information of interest.*