



# SOUTHERN CALIFORNIA HORTICULTURAL SOCIETY

*Where passionate gardeners meet to share knowledge and learn from each other.*

socalhort.org

NEWSLETTER

August 2019

## OUR NEXT MEETING

**Thursday, August 8**

Friendship Auditorium  
3201 Riverside Drive  
Los Angeles, CA 90027



**Socializing: 7:00 pm**

**Meeting begins: 7:30 pm**

## SCHS WELCOMES NEW MEMBERS

*We gained several members  
in July - please say hello to:*

Genevieve Arnold  
Marian Coensgen  
Leesa Martling

**www.socalhort.org**

## SHARING SECRETS

For August, we are interested  
in hearing about:

***What seeds are you collecting  
for next year's garden?***

Reply at: [www.socalhort.org](http://www.socalhort.org)  
or email your response to:  
[gardensbysabine@aol.com](mailto:gardensbysabine@aol.com)

by Monday, August 12

## IN THIS ISSUE

August Speaker/Program and  
SCHS Announcements ..... 1  
July Recap, Sharing Secrets,  
L.A. Zoo Trip Summary ..... 2  
Horticultural Happenings ... 3  
Upcoming Programs and  
SCHS Contact info. .... 4  
2019 HOTY Registration and  
Green Sheets ..... Supplemental

## Kumeyaay Ethnobotany: Shared Heritage of the Californias

August brings anthropologist Michael Wilken-Robertson to the SCHS, to present his explorations of the captivating world of northern Baja California's original peoples and their descendants, whose



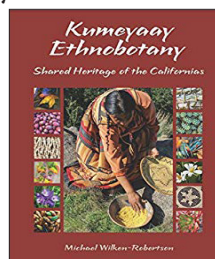
profound knowledge of the land has sustained them from ancient times to the present. He currently teaches in the anthropology department at California State University, San Marcos and is the author of *Kumeyaay Ethnobotany* which explores the remarkable interdependence between native peoples and native plants of the Californias and serves as the basis for his presentation.

Wilken-Robertson's research and advocacy work with Native Baja Californians has explored traditional arts (pottery, basketry, oral narratives, and song), ethnobotany, history, languages, and cultural landscapes

of the indigenous peoples of the northern Baja California region. He has developed lifelong collaborative relationships with native artists and traditional authorities to foster cultural revitalization and sustainable community development. His fascination with native plants and the natural landscapes of the Californias has inspired him to explore the many ways that humans have interacted with their environments, from the past up to the present.

The program will provide in-depth descriptions of 47 native plants and their uses, lively narratives, and vivid photographs. It connects the archaeological and historical record with living cultures and native plant specialists who share their ever-relevant wisdom for future generations.

Wilken-Robertson will also share some of the stories behind his book and have copies available to purchase at a book signing following the talk.



## 2019 HOTY BANQUET

**TICKETS AVAILABLE  
Online or By Mail**

**SATURDAY, SEPTEMBER 28**

at the L.A. County Arboretum  
*honoring Mike Evans*

**Reservation Form enclosed**

It is time to mark your calendars for our annual SCHS Horticulturist of the Year Award Banquet! This year's honoree will be noted California native plant expert and founder of Tree of Life Nursery, Mike Evans.

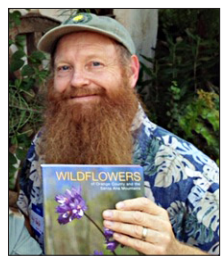
## CALL FOR SILENT AUCTION

The Silent Auction, held at the HOTY banquet, is a major fundraiser for the SCHS and a great opportunity for members to donate – and bid on – all manner of garden-related treasures! You may bring donations for this popular event to the August meeting, or contact Steve Gerischer at [sglarkspur@aol.com](mailto:sglarkspur@aol.com) or (323) 257-3629, to coordinate a pickup. OR – if given advance notice, he can prepare a bid card for anything you wish to drop off on the evening of the event.

**Thank you for participating!**

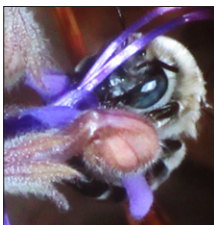
**PLEASE NOTE: Silent Auction bidding closes at 7:00, BEFORE dinner, and pickup is after award presentation.**

The SCHS was entertained and educated in July by Robert “Bob” Allen, who spoke on Southern California’s native pollinators and their impact on our ecology. By combining his personal interests, studies and research as an entomologist, botanist, instructor, and nature photographer, Bob was able to present a program that gave life to scientific data, often through his beautiful photographs.



The slide show began with a basic introduction to the process of pollination, including details about its various mechanisms, and he dispelled some common fallacies (e.g., the misconception that butterflies and honeybees are major pollinators). Bob then spoke about beetles, flies, butterflies, moths, ants, and wasps, as well as various types of bees and the ways in which they all pollinate specific types of plants. He also explained that only the estimated 1,600+ native bee species, who evolved alongside our native plants and have the necessary structures and behaviors required for effective pollination, are the most successful at pollinating those native plants.

Bob proceeded to share relevant facts about native pollinators – who they are, and how they operate. He explained the difference between long-tongued and short-tongued bees, sweat bees, leaf-cutters and others, as well as the fact



that most bees are solitary ground dwellers. He also showed his own incredible photos illustrating this diversity, as well as a very brief video showing a native bee being hit in the abdomen by pollen that is “exploding” from a solanum flower. Because research suggests that flowers of native plants are up to four times more attractive to native bees than non-native flowers, Bob suggested that gardeners incorporate as many native plants into their gardens as possible. He used the slide below to explain the benefits of this approach vs. planting a predominantly non-native garden:

STERILE GARDEN	NATURALISTIC GARDEN
NON-NATIVE PLANTS	NATIVE PLANTS
NON-NATIVE PESTS	VERY FEW PESTS
PESTICIDES!	NO PESTICIDES
MINDLESS MAINTENANCE (WEEDING, DEADHEADING; MOW, BLOW, & GO)	SOME MAINTENANCE (WEEDING, DEADHEADING; NO MOW, NO BLOW, NO GO)
NO CONNECTION TO THE LAND	STRONG CONNECTION TO THE LAND
NOT USED BY OTHER LIFEFORMS = NO HABITAT = NO BIODIVERSITY	USED BY OTHER LIFEFORMS = HABITAT = BIODIVERSITY!

After his presentation, Bob encouraged people to learn about native bees by getting out of manicured gardens to observe bees in the wild, and also recommended visiting the Pollinator Partnership website at: [www.pollinator.org](http://www.pollinator.org). For those interested in learning more, Bob is the author of the field guide *Wildflowers of Orange County and the Santa Ana Mountains* (published 2013 and also relevant to much of the L.A. basin), which is available from the Orange County chapter of the California Native Plant Society at: <https://www.occnps.org/wildflower-book.html>.

✿ Sabine Steinmetz

## SCHS VISITS L.A. ZOO'S BOTANICAL TREASURES

On July 13, SCHS members were treated to a behind-the-scenes horticultural tour at the Los Angeles Zoo and Botanical Gardens in the hours before it opened to the public. Hosted by SCHS member and zoo employee, Sandy Masuo, attendees were told how the zoo feeds its many herbivores with plants grown on the grounds whenever possible; what the animals' most popular “browsing” foods are (including ficus, mulberry, acacia and Chinese elm); and insight into how the zoo tries to create environments that simulate the animals' native habitats, while using plants they will not be likely to destroy. She then introduced attendees to a group of docents who split guests into groups to tour and explore the zoo grounds.

Docents Landes Bell, Kate Gaman, Teri Hoffman, Francie Klein and Rita Lossett, led visitors to botanical specimens including *Xanthorrhoea*, *Jubaea chilensis*, several *Stenocarpus*, and *Metasequoia glyptostroboides* among others, before rendezvousing at Bonnie's Edible Garden. Established in 1989, this garden grows plants to help enrich the lives of the animals. Docent Paulette Heath provided guests with history and some trivia, including that corn stalks (minus the corn) are a favorite of the elephants. After the tour concluded, visitors were able to explore the entire zoo on their own to see both animals and plants – perhaps with a fresh perspective.

We would like to thank the SCHS board and Sandy Masuo for arranging this unique tour, and to give special recognition and appreciation to the wonderful docents who came in early on a Saturday morning to provide SCHS members with horticultural insights about the zoo. To see a photo album of the tour, please visit our Facebook page.



Photo by: Sabine Steinmetz

✿ Sabine Steinmetz

## SHARING SECRETS

In July we were curious about:

*What garden get-aways do you recommend visiting during the summer?*



Mildred Matthias Botanical Gardens on the UCLA campus.

- Joan Mead

Around L.A. there's the Arboretum, and Huntington Gardens is always a must. Further north Lotusland in Montecito or Seaside Gardens in Carpinteria, and to the south San Diego Wild Animal Park. That last one's a roar and snore – best to make it a sleepover!

- Gary Kamisher

Frederik Meijer Gardens and Sculpture Park in Grand Rapids, Michigan.

- Jessica Carlson

Self-Realization Fellowship in Pacific Palisades and San Diego Botanic Garden in Encinitas (formerly Quail Gardens).

- Joan Borgman

Santa Barbara Botanic Garden - all seasons to understand what your native garden will look like year 'round – and my garden!

- Suzanna

*Thanks for these wonderful suggestions - one of which would make a great road trip!*



# AUGUST HORTICULTURAL HAPPENINGS

*Please contact location(s) to confirm listed events, and for a full schedule.*

*Events are free with admission unless otherwise indicated.*

**Locations are listed by Zip Code.**

## NATURAL HISTORY MUSEUM OF L.A.

**900 Exposition Blvd., Los Angeles 90007  
213.763.3466 [nhm.org](http://nhm.org)**

Daily, 3:30pm, Nature Walk. Meet outside the Nature Lab (under the bridge) for a walk in the Nature Gardens to explore the diversity of life that calls L.A. home.

Every Saturday and Sunday, 11am, Nature Gardens Exploration. Meet outside the Nature Lab (under the bridge) for a hands-on activity in our Nature Gardens.



## SOUTH COAST BOTANIC GARDEN

**26300 Crenshaw Blvd., Palos Verdes 90274  
310.544.1948 [southcoastbotanicgarden.org](http://southcoastbotanicgarden.org)**

Saturday, 8/24, 9am-5pm. American Begonia Society Palos Verdes Chapter Show and Sale. Begonias are foliage-lover favorites and despite coming from rainforests, they do very well in Southern California. They are especially attractive in pots but also thrive in gardens planted in a semi-shady location. Join us for displays and plant sales.



## RANCHO LOS CERRITOS

**4600 Virginia Road, Long Beach 90807  
562.206.2040 [rancholoscerritos.org](http://rancholoscerritos.org)**

Saturdays & Sundays, 1-5pm. Rancho Los Cerritos offers free 1-hour garden tours for visitors. For details go to: [www.rancholoscerritos.org/things-to-do-hub/tours/](http://www.rancholoscerritos.org/things-to-do-hub/tours/).



## LOS ANGELES COUNTY ARBORETUM

**301 N. Baldwin Ave., Arcadia 91007  
626.821.4623 [arboretum.org](http://arboretum.org)**

Saturday & Sunday, 8/10 & 8/11, 9am-2pm. Inter-City Cactus & Succulent Show is a competitive display of some of the best cultivated plants in So Cal. Free for members and for non-members with paid admission. For questions, call 626-821-3222.

Friday, Saturday, & Sunday, 8/16-18, 9am-12noon. California Rare Fruit Growers Festival of Fruit 2019. A 3-day celebration with growing talks, workshops, garden and nursery tours, vendor booths, tastings, and more. Free for members and for non-members with paid admission. Register online at: <https://festivaloffruit.org/>. For questions, call 626-821-3222.

Saturday, 8/24, 10am-noon. Learn All About Invasive Plants with Arboretum Plant Information Consultant Frank McDonough. Find out what makes a plant invasive and what are some problematic plants in So Cal today. \$25 members, \$35 non-members. Register online at: [arboretum.org/calendar](http://arboretum.org/calendar). Questions? Call Education Dept. at 626-821-4623.

## EATON CANYON NATURE CENTER

**1750 N. Altadena Dr., Pasadena 91107  
626.398.5420 [ecnc.org](http://ecnc.org)**

Saturday, 8/17, 9am-12noon, Nature Patio. Conservation Work Day. Help weed invasive plants to conserve habitat for the native species. Gloves, tools and snack provided. Please bring your own drinking water. Wear clothing, footwear and sun protection for outdoor work. Volunteers under the age of 18 need to bring along an adult. RSVP to [eatoncanyon.conservations@gmail.com](mailto:eatoncanyon.conservations@gmail.com)



## HUNTINGTON BOTANICAL GARDENS

**1151 Oxford Road, San Marino 91108  
626.405.2100 [huntington.org](http://huntington.org)**

Every Saturday, 10am-1pm. Ranch Open House. Stop by this urban agriculture site (open weekly) and pick up fresh ideas for sustainable gardening. Cancelled in event of rain.

Saturday, 8/17, 9am-12noon. Summer Fruit Tree Pruning with Lora Hall of Full Circle Gardening. This hands-on workshop covers training young trees; when, why and how to prune for health; and common pest and disease issues. \$35 members, \$45 non-members. Advance registration required at [www.huntington.org/calendar](http://www.huntington.org/calendar).

Thursday, 8/22, 4:30-5:30pm, Brody Botanical Center. Botany Bay Series: Plant Science for Gardeners and Citizen Scientists with Jim Folsom, the Telleen/Jorgensen Director of the Botanical Gardens. Explore the plant world through discussion and hands-on lab time in this monthly series. No reservations required. Repeats 4th Thursdays.

Saturday, 8/24, 9:30-11:30am. Children's Workshop: Prickly Poetry with book artist Rachel Curry to create mixed-media pop-up books inspired by cacti. Kids will embellish their books with spines and flowers and write their own poems. Ages 7+. Fee includes 1 child and 1 accompanying adult. \$35 members, \$45 non-members. Advance registration required: [www.huntington.org/calendar](http://www.huntington.org/calendar).

Saturday, 8/31, 8:30am-5pm, Ahmanson Room, Brody Botanical Center. 36th Annual Succulent Plants Symposium. International experts will discuss topics ranging from rare West Indian cacti to endangered species legislation. \$85. Preregistration required: 626-405-3504.



## THEODORE PAYNE FOUNDATION

**10459 Tuxford St., Sun Valley 91352  
818.768.1802 [theodorepayne.org](http://theodorepayne.org)**

Saturday, 8/10, 8:30-10am. Cool Container Plants with Flora Ito, TPF Nursery Sales Manager. This outdoor session offers tips for potting up natives. Pots and supplies, including our custom soil mix, will be available for purchase. \$15 members, \$20 non-members. Register at: <https://www.eventbrite.com/o/theodore-payne-foundation-6606817237>

Saturday, 8/10, 1:30-4pm. Right Plant, Right Place with Lili Singer, TPF's Director of Special Projects. Learn about plant communities, how to choose plants, and assess garden conditions like climate, soil, sunlight and space. Prerequisite for TPF's 3-Part California Native Garden Design Course. \$25 members, \$35 non-members. Register at: <https://www.eventbrite.com/o/theodore-payne-foundation-6606817237>

Friday, 8/17, 9-10am. Irrigation Basics for the Native Garden with Tim Becker, TPF Director of Horticulture. Learn about irrigation principles, techniques and equipment for native plant landscapes – with practical examples, a demo of TPF's system, and time for questions. Bring a hat and water bottle. \$30 members, \$40 non-members. Register at: <https://www.eventbrite.com/o/theodore-payne-foundation-6606817237>

Saturday, 8/17, 1:30-3:30pm. Look, Ma, No Lawn! with Steve Gerischer, owner of Larkspur Garden Design. Ready to lose the lawn? We'll explain how and offer low-care, low-water native plant alternatives that need no fertilizer. \$25 members, \$35 non-members. Register at: <https://www.eventbrite.com/o/theodore-payne-foundation-6606817237>

Saturday, 8/24 & 9/7 & 9/21, 9am-1pm. Three-Part California Native Garden Design with Andreas Helsing, Landscape Designer and Contractor, Scrub Jay Studios. This course offers a foundation in design, process, sustainability, and how to model a garden after patterns in nature. Limit: 8. Prerequisite: Right Plant, Right Place class (must be taken before first design class). \$225 members, \$275 non-members; \$285 member couples, \$335 non-member couples. Last day to register: Friday, August 16, at: <https://www.eventbrite.com/o/theodore-payne-foundation-6606817237>

Saturday, 8/31 & 9/14 & 9/28, 9am-1pm. Three-Part California Native Garden Design with Shawn Maestretti, Landscape Architect, Shawn Maestretti Garden Architecture. (SEE PREVIOUS LISTING FOR DETAILS) Prerequisite: Right Plant, Right Place class (must be taken before first design class). \$225 members, \$275 non-members; \$285 member couples, \$335 non-member couples. Last day to register: Friday, August 23, at: <https://www.eventbrite.com/o/theodore-payne-foundation-6606817237>



## RANCHO SANTA ANA BOTANIC GARDEN

**1500 N. College Ave., Claremont 91711  
909.625.8767 [rsabg.org](http://rsabg.org)**

Saturday, 8/24, 9-10am, 11am-12noon, 1-2pm. Design Consultation Workshop: Creating a Native Garden. Individual one-on-one design consultations with Nursery Staff guiding you through layout options and plant selection. Participants must provide digital photos of their landscape **at least one week prior**, and upon registration will receive a sheet with preparation suggestions. \$80 members, \$120 non-members. Limited to first 6 registrants (two per time slot). Register by: August 10 by emailing: [gncclaremont@rsabg.org](mailto:gncclaremont@rsabg.org).



## U.C. RIVERSIDE BOTANIC GARDEN

**900 University Ave., Riverside 92521  
951-784-6962 [gardens.ucr.edu](http://gardens.ucr.edu)**

Saturday, 8/10, 6-8pm. Twilight Tour. Join us for a guided tour and enjoy the magic of the Gardens at Twilight! Light refreshments will be served. \$7 members, \$10 non-members. Tickets available at [www.gardens.ucr.edu](http://www.gardens.ucr.edu). For more information, [ucrbg@ucr.edu](mailto:ucrbg@ucr.edu) or 951-784-6962.

Yvonne Savio

Unless otherwise noted, meetings are regularly held at Friendship Auditorium, 3201 Riverside Drive, Los Angeles, 90027

✻ August 8 - Anthropologist Michael Wilken-Robertson speaking on *Kumeyaay Ethnobotany: Shared Heritage of the Californias*

✻ Sept. 28 - SCHS Annual Horticulturist of the Year Award Banquet and Silent Auction, honoring Mike Evans

**VENUE CHANGE - HOTY banquet will be at L.A. Arboretum**

✻ Oct. 10 - Turf Alternatives Panel with Cassy Aoyagi, Ellen Mackey, Joel Lichtenwalter and moderator Wynne Wilson

✻ Nov. 14 - Program TBA

## GARDEN QUOTE OF THE MONTH

"Why just fit in  
if you were born to stand out?"

- Theodor Geisel  
(aka Dr. Seuss)

**AUGUST**

**John Schoustra** - President, Field-Trip Committee, Finance Committee, Plant Raffle, Plant Sales at meetings

**Steven Gerischer** - Vice President, Oral History Committee, PR

**Laura Bauer** - Treasurer, Finance Committee, Website Committee, HOTY Event Committee, Voicemail

**Pat Steen** - Membership Secretary, Recording Secretary, Field Trip and Coffee-in-the-Garden Committees, Greeter

**Carol Aronson** - Field Trip & Coffee-in-the-Garden Committees, Program Committee

**Carol Bornstein** - Program Committee

**Aprille Curtis** - Social Media Committee, Plant Forum supplies

**Fleur Nooyen** - Program Committee

**Steven Ormenyi** - Finance Committee

**Yoav Paskowitz** - Finance Committee, Oral History Committee, Website Committee, Newsletter Copy Editor

**Yvonne Savio** - Horticultural Happenings, Field Trip and Coffee-in-the-Garden Committees

**Lili Singer** - Board Nomination Committee, PR, Archives, Social Media Committee

**Sabine Steinmetz** - Newsletter Editor, Sharing Secrets, Graphic Design

**Jill Vig** - Coffee-in-the-Garden Committee, Oral History Committee, Special Projects

**818-567-1496 / socalhort.org / Join us on Facebook**  
Newsletter Editor: Sabine Steinmetz

Contributors to this issue: Michael Wilkens-Robertson, Yvonne Savio

**Next deadline: Monday, August 12** (for September newsletter)  
Please contribute an article or information of interest.



Southern California  
Horticultural Society  
P.O. Box 94476  
Pasadena CA 91109-4476

**NEWSLETTER August 2019**