



SOUTHERN CALIFORNIA HORTICULTURAL SOCIETY

Where passionate gardeners meet to share knowledge and learn from each other.

socalhort.org

December 2013 Newsletter

OUR NEXT MEETING

Thursday, December 12
Friendship Auditorium
3201 Riverside Drive, Los Angeles CA 90027
7pm. Social Hour
Meeting begins at @ 8pm.

SCHS WELCOMES NEW MEMBERS

Sean Briski/ Darren Chard
Aprille Curtiss/ Dan Fujiwara
David Godshall/ Eugene McCarthy and Joanna Wollcott
Christina Nemick/ Diane Parr
Sharon Ratterree

SHARING SECRETS QUESTION

In anticipation of our January meeting, the Sharing Secrets question for December is: *"What changes are you planning for your garden this coming year?"* You can answer on our MemberLodge website or e-mail your response to: sglarkspur@aol.com by Friday, December 13.

IN THIS ISSUE

November Meeting Recap by Steven Gerischer..... 2
Sharing Secrets2
Horticultural Happenings by Bettina Gatti3
Upcoming Programs.....4

The December Meeting

Tom Nuccio: Early Camellias and Other Winter Wonders + Members Night (aka "Cookie Night")

Thursday, December 12, 2013



Our always festive December meeting features our traditional "cookie night" of delicious finger foods -- cookies, dried fruit, fresh fruit, Steve's quiches and habanero jelly, etc. Please bring your specialty or favorite to share! Drinks will be supplied by the Society.

This meeting also includes a special program: Early Camellias and Other Winter Wonders, with Tom Nuccio. He'll be bringing live samples of early camellias, azaleas and other early-winter bloomers for Southern California

gardens. Following the presentation, several choice plants will be raffled off to lucky ticket buyers!

Tom and other members of the Nuccio family operate the beloved Nuccio's Nurseries in Altadena, world-famous growers of rare camellias and azaleas since 1935. Their inventory also includes dogwood, clivia and other enticing flowering plants for this region. Tom is a passionate and entertaining speaker -- and a great supporter of local gardens and gardeners.

-Lili Singer

SCHS PRIVACY POLICY

Recently, one of our members sent a politically-motivated message to some people that appeared to come from our database and social network, SCHS MemberLodge. We want to assure you that our website was not hacked, and your information is safe.

The Member Directory is only available to SCHS members who are logged in to the site. The only information available for view is the member's name, city and area of interest. No other personal information is viewable. SCHS members can choose to allow other members to send email messages to them. If you do send a message to an SCHS member from the Member Directory, the sender CANNOT see the recipient's address, and you cannot send to multiple recipients from the Member Directory. You can disable this feature by changing your privacy options (see below). This means other

people would still see your name listed as an SCHS member, but they would not be able to send you an email message from the Member Directory. Only site administrators can send messages to all members through MemberLodge. We use this service to send you the Newsletter and event notices. SCHS will not sell or share database information with other organizations. If you block email messages from other members, you will still receive the Newsletter, event announcements and other official notices from the administrators.

The purpose of the MemberLodge is to share horticultural and event information pertaining to the Southern California Horticultural Society, and to build bonds between members. Abuse of this list will not be tolerated by SCHS, no matter what the cause. TO ACCESS AND CHANGE YOUR PRIVACY OPTIONS:

The MemberLodge Membership Directory is set up to show your name, city and interests to other members. Unless you opt out, your name provides a link to send a message to the email address associated with your SCHS account. (Your email address is not visible to the sender.) No other personal information is available through the directory. You can choose to allow people to send you messages, or block this. To change your options, go to View Profile. Click on Privacy. From the Privacy page, choose Edit Profile. To prevent other members from sending you messages via the Member Directory, choose "No Access" for Send Message Form. Your Directory profile will still show your name, but it will not be a link to your email address. If you have any questions or concerns, contact Laura Bauer at lbauer@ehuffy.com

Novemebr Meeting Recap

The November meeting of the Southern California Horticultural Society was a discussion of the making of a garden designer, Bernard Trainor. Bernard presented selected images from the book, *Landprints*, about his work designing spectacular gardens in Monterrey, Big Sur and the Carmel Valley area as well as other smaller, more intimate projects. He spoke of his upbringing in the Mornington Peninsula region of Australia where the rugged coast and tough, beautiful vegetation all left their mark on him without his awareness. His formative years learning the art of gardening and landscaping were steeped in tradition (traditional English gardens no less), before he began to realize that many of those traditions were hide-bound and required tremendous effort and resources to maintain. Mr. Trainor told us how he slowly realized that the native vegetation of any region, mixed with well chosen plants from other regions with the same climate could produce a nearly effortless and sustainable beauty.

His work with Beth Chatto was to steer him in a direction of breaking with old tradition s and working with plants suited to dry, warm climates. A move to California shifted that design ethos even further towards using drought adapted and native plants. He took to these new ideas with stunning results, as we were treated to in his pictures.

The gardens in Carmel and Big Sur, with their rugged beauty and inspiring backdrops were breathtaking. Working closely with architects and homeowners (and most with large budgets) resulted in remarkable feats of landscape engineering and design offering new, iconic visions of just what a grand landscape can be.

Thank you, Bernard Trainor for the treat of seeing these beautiful creations and telling us what goes into making them.

Thanks to all who helped set up and run the meeting as well as those who stay after and help clean up!

See you in December, with cookies and goodies for Tom Nuccio, presenting: *Early Camellias and Other Winter Wonders*.

GET BAKING!!!

-Steven Gerischer

SHARING SECRETS

In November, we asked you to answer "What is the best garden related gift you have ever received?" and here are some of your responses. Read more on our SCHS MemberLodge website, schs.memberlodge.org.

The bare ground on which to build a garden.

-Catherine Pannell

RAIN!

-Kay Hoevel

A wheelbarrow.

-Elysia Rosenfeld-Ortiz

One year for Christmas, my husband gave me a chipper/shredder. You would have thought I got a diamond ring, I was so thrilled!

-Robin Corwin

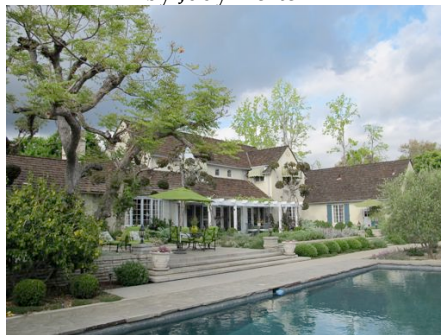
A pair of Felco #6 pruners!

-Dorena Knepper

COFFEE IN THE GARDEN

October 27, 2013

Donivee Nash's Garden, Arcadia; designed by Judy Horton



What a wonderful day we had in Donivee Nash's garden in Arcadia on October 27, 2013! The weather began clear and cool, fogged in, and evaporated into bright sun. Glorious Fall Southern California weather, perfect for garden meandering. Donivee Nash's garden is perfect for strolling and stopping to admire the intricacies of the view. Designed by renowned garden designer and SCHS member Judy Horton and assisted by Libby Simon, the garden flows among varied groupings of greenery and colors, lawn and groundcovers, salvias and succulents, woodland trees and fruit trees, perennials and vegetables, terraces and expanses.

Carefully collected specimens abound in-ground and in containers. The pathways are a delight to wander, with gathering areas and private nooks.

Donivee and Judy provided an overview and specific details of the design project – to save irrigation water. Judy was kind enough to provide a plant list.

Some visitors marveled at the "whole forest grove" feel across the south border of the property and east side of the property, highlighting sycamores and liquidambar, birches, cotinus, fagus, lonicera, loropetalum, pittosporum, quercus and a robinia.

Blooming roses included 'Polka', 'Sally Holmes', and 'Eden'.

Grapes on the arbor were *Vitis californica* 'Roger's Red' and champagne *Vitis vinifera* *purpurea*.

Salvias abounded throughout the garden, offering wispy to bulky foliage in greens ranging from greys to blues. They included *Salvia chiapensis*, *S. elegans*, *S. mexicana* 'Limelight', 'Mystic Spires', *S. pomifera*, *S. puberula*, 'Purple Majesty', *S. spathacea*, 'Wendy's Wish', and a purple variety of 'Van Houtei'.

The edible garden included citrus, figs ('White Genoa' and 'Brown Turkey'), *Lavandula x intermedia* 'Provence White', 3 oreganos (*O. dictamnus*, 'Hopley's Purple'), and 'Marshall's Memory'), rosemaries ('Boule', 'Tuscan Blue').

Clipped into balls that "rolled" down from the edible garden to the lawn were lavender, 'Little Ollie' olives, 'Tuscan Blue' rosemary, *Teucrium chamaedrys*, and *Westringea fruticosa* 'Morning Light.'

Although Donivee admitted that there hasn't been much reduction in the cost of irrigation, she was confident that – now that the plantings are well-established – she can reduce the amount of water she applies. With delicious refreshments provided by Coffee In the Garden committee members Joel Lichtenwalter, Pat Steen and Yvonne Savio – and highlighted on Donivee's beautiful serving platters – a wonderful time was had by all.

-Yvonne Savio

Contact each listing below to confirm the event, for details and for a full schedule.
☎=Registration requested or required.

ARCADIA 91007

L.A. COUNTY ARBORETUM & BOTANIC GARDEN

301 N. Baldwin Ave.
626-821-4623; arboretum.org

Sunday, December 8
10:00am-4:00pm

An Old-Fashioned Holiday at the Queen Anne Cottage. Tours will be available throughout the day. Free with general admission.

Saturday, December 14
12:00-4:00pm

Organic Fruit and Vegetable Gardening. This class focuses on seasonal production and covers a variety of topics. Fee ☎

BEVERLY HILLS 90210
TREE PEOPLE

12601 Mulholland Drive
818-753-4600; treepeople.org

Saturday, December 7
9:00am-1:00pm

Native Plants and Turf Reduction. Participants will receive tools to determine what is appropriate for their site along with resources and a tour of the on-site native plants. Free

CLAREMONT 91711

RANCHO SANTA ANA BOTANIC GARDEN

1500 N. College Ave
909-625-8767 x224; rsabg.org

Saturday, December 7
10:00am-1:00pm

Free Native Plant Clinic. Get native plant gardening questions answered by RSABG gardening experts. Garden admission not necessary to attend.

Saturday, December 7
10:30am-12:30pm

Holiday Native Plant Wreaths. Antonio Sanchez leads this fun holiday workshop where participants will style their own wreaths using fragrant foliage, fruits, and other native cuttings. Fee ☎

Sunday, December 8
10:00am-1:00pm

Medicinal Plants of California Herb Walk. Join experienced herbalist William Broen for a Garden walk and presentation featuring medicinal and edible plants native to California. Fee ☎

LA CANADA FLINTRIDGE 91011

DESCANSO GARDENS

1418 Descanso Drive
818-949-7980; descansogardens.org
Saturday, December 7
11:00am (Repeats at 2:00pm)
Wreath Making Class. Registration deadline Dec. 3. Fee ☎

LOS ANGELES 90049

GROW NATIVE NURSERY

100 Davis Avenue
424- 234-0481

Saturday, December 7
10:00am-1:00pm

Pruning, Pinching and Pollarding: The Basics of Pruning Native Plants. Colleen Wheeler leads this hands-on workshop. Participants are requested to bring pruners if they have them. Free.
style will be held in the garden center. Fee ☎

Saturday, December 14
10:00-11:00am

California Native Edible Plants: From Garden to Kitchen. Limit 20 participants. RSVP to cwheeler@rsabg.org

PALOS VERDES PENINSULA 90274

SOUTH COAST BOTANIC GARDEN

26300 Crenshaw Blvd.
(310) 544-1948
southcoastbotanicgarden.org

Sunday, December 1
8:00am-12:00pm

Audubon Bird Walk. This group meets in the courtyard then heads out into the garden looking for unusual and residents birds. Free.

SAN MARINO 91108

HUNTINGTON BOTANICAL GARDENS

1151 Oxford Rd.
626-405-2128; huntington.org

Thursday, December 12
2:30pm

Garden Talk and Plant Sale: A Christmas Garden. Kathy Musial talks about plants that can lend festive color to the garden at Christmastime. Free

SUN VALLEY 91352

THEODORE PAYNE FOUNDATION

10459 Tuxford Street
(818) 768-1802; theodorepayne.org

Saturday, December 7
9:00am-1:00pm

California Native Plant Horticulture with Lili Singer. Essential information on gardening with native plants. Required prerequisite to the three-part California Native Plant Garden Design course. Fee ☎

Saturday, December 7

1:30-3:30pm
NEW! An Armchair Native Garden Tour with Barbara Eisenstein. Organized by theme, images in this inspiring new class focus on residential native plant gardens of Southern California. Fee ☎

Saturday, December 14
9:00am-12:00pm

Propagating California Native Plants with Tim Becker and Madalena Asbell. Various species of native plants will be discussed and started from cuttings in this hands-on session, and you'll leave with a flat of cuttings for your own garden! Fee ☎

Saturday, December 14
1:30-3:30pm

NEW! Beneficial Bugs in the Garden with Lili Singer. This richly illustrated lecture highlights helpful bugs you're likely to find in home landscapes, with tips on how to attract and conserve them. Fee ☎

THOUSAND OAKS 91358

CONEJO VALLEY BOTANIC GARDEN

350 W. Gainsborough Rd.
805-494-7630; conjejogarden.org

Sundays, December 1, 8, 15, 22 & 29
11:00am-3:00PM

Plant Sale. Native and water-wise plants; held at Kid's Adventure Garden. Free

Thursdays, December 5 & 19
9:30am

Floral Design Classes. Floral design in the Sogetsu style will be taught in the garden center. Fee ☎

The Los Angeles/Santa Monica Mountains Chapter of the **California Native Plant Society** next meeting is Tuesday, December 10 from 7:30 to 9:00pm at the First Unified Methodist Church, 1008 Eleventh Street in Santa Monica. Emile Feisler will give a slideshow and presentation on pollinators. Non members welcome. Free.

- Compiled by Bettina Gatti
Send notices to bettina0203@hotmail.com.

UPCOMING 2014 SCHS PROGRAMS

At Friendship Auditorium, 3201 Riverside Drive, Los Angeles CA 90027, starting at 7:30 pm, unless otherwise noted.

January 9- Brian Kimbel: Aloes

February 13- To be announced.

March 13- Randy Baldwin: *Australian Native Plants for California Gardens.*

MATT RITTER OFFERS TREE ID APP

Hey Tree Huggers!

Our friendly expert and sometimes guest lecturer, Matt Ritter, has written a great App for identifying trees. It's called **City Tree**, and it's available on both the iOS and Android platforms. Much like Matt's book *A Californian's Guide to the Trees Among Us*, the app offers an easy way to key trees in the field and offers great pictures and information.



Happy
Holidays!

Southern California
Horticultural Society
PO Box 94476
Pasadena CA 91109-4476

NEWSLETTER
December 2013

Board of Directors

Steven Gerischer, *President, Pacific Horticulture Board, Programs & Newsletter*

James E. Henrich, *Vice President, Green Sheet & Membership*

Laura Bauer, *Treasurer & Finance*

Joel Lichtenwalter, *Membership Secretary*

Pat Steen, *Secretary, Membership*

Carol Bornstein *Programs*

Tom Carruth

Sandy Masuo, *Facebook & Field Trips & Volunteer Coordinator*

Yoav Paskowitz

Yvonne Savio, *Programs & Field Trips*

John Schoustra, *Plant Raffle & Plant Sales*

Lili Singer, *Selected Book Sales & Programs*

Jill Vig, *Pacific Horticulture Board*

818-567-1496 / socalhort.org / Join us on Facebook

Newsletter Editor: Steven Gerischer

Contributors to this issue: Bettina Gatti, Steven Gerischer, Lili Singer, Yvonne Savio, Laura Bauer, and Sharing Secrets contributors.

Next deadline: Friday, December 13 (for January newsletter).

It is the Friday following our monthly membership meeting.

Please contribute an article or information of interest.