



SOUTHERN CALIFORNIA HORTICULTURAL SOCIETY

Where passionate gardeners meet to share knowledge and learn from each other.

socalhort.org

NEWSLETTER

December 2023

OUR NEXT LIVE MEETING

Thursday, December 14

Announcements at 7:00 p.m.

Sorry, No Plant Forum

Program at 7:30



Visit: www.socalhort.org
for more information

WELCOME NEW MEMBERS

*Joining us just in time for
the holidays are:*

Javanni Jenkins
Helen Yee

*Hope we see you
at the Holiday Party!*



Find membership options at:
www.socalhort.org/join

CONNECT WITH SCHS

Please engage with us online.

YOU CAN FIND US AT:

www.socalhort.org
www.facebook.com/pg/socalhort
www.instagram.com/socalhort



All membership options
are listed on our website.

IN THIS ISSUE

December Program and Holiday Party	1
November Program Recap, HOTY Silent Auction Donors and Garden Share	2
Horticultural Happenings	3
Upcoming Programs and SCHS Contact info.	4

Avocados: Their Natural History & How to Grow Them in Southern California

On Thursday, December 14, the SCHS will celebrate the holiday season with a live gathering at Friendship Auditorium, which will include food, activities and a tasty talk on avocado growing.

Our program for the evening is titled "Avocados: Their Natural



History and How to Grow Them in Southern California", and will be presented by guest speaker

Eric Focht of UC Riverside. He has been working there since 1999 in various capacities dealing with avocado research and breeding and is currently in the Botany and Plant Sciences Department.

We will be hearing from Focht about his in-depth work, which since 2005, has been overseeing the

day-to-day breeding aspects of the avocado program. He is currently pursuing a doctorate in Plant Biology and will share some of his expert knowledge and insights on growing these fascinating – and delicious – fruits!

Since this live monthly meeting is in December, in addition to featuring a speaker presentation, we will have time before and after to enjoy socializing, as well as sampling sweet and savory potluck fare provided by members – perhaps something with avocados? And, following the program, attendees may pick up garden-themed treasures to take home from our popular "freebie" giveaway table filled with members' donations! (See side panel for details on the party activities.)

You are invited to join us for this festive evening that will offer a variety of fun with something for everyone – you won't want to miss it! We hope to see you there.

SCHS HOLIDAY PARTY

In addition to hosting a guest speaker, the December meeting is also our annual holiday party, featuring:



PLANT SALES

Browse selections from our plant vendors during the evening – shop early for holiday gifts or for yourself!

TASTY TREATS

To celebrate the season, we invite you to bring a sweet or savory treat to share with the group. Appetizers, finger foods, cookies and desserts are all welcome - we'll provide the tableware.

GIVE-AWAY TABLE

Give or receive at our "Freebie Table" where members' gently used garden-themed treasures will be displayed for a timed give-away. (Time will be announced AFTER speaker's presentation.) Always fun, but please be prepared to take your items home if no one else snaps them up...



**SEE YOU ON
DECEMBER 14**

at Friendship Auditorium
3201 Riverside Dr., L.A. 90027

The speaker's program will be in person and recorded. The entire presentation will be archived and subsequently made available for viewing on our YouTube channel.

NOVEMBER RECAP • HOTY ACKNOWLEDGEMENTS • GARDEN SHARE

On November 9, Sandy Masuo, the senior writer in The Huntington's Office of Communications and Marketing kept us entertained and engaged with her program: *Rooted in History: Stories from the Huntington*. Using materials sourced from the Huntington's vast collections, her program took us on a three-part journey through historical gardening texts, ultimately relating all the elements to present day practices.

In "Act I" Masuo likened the act of gardening to the process of editing text, in that a garden is a kind of narrative that reflects the gardener who tends it, with every garden having a story to tell. Historically, different types of gardening arose from the varying needs of gardeners to contain nature and control it for their own purposes. Beginning with an Egyptian garden ca. 1380 BCE, that had a central water feature bordered by trees, both fruiting and ornamental, she posited that these basic components were evident across many cultures, and that garden features evolved alongside these civilizations, much like literature evolved with the development of written language. In an illustrated document of a walled Roman garden with an ornamental fountain, from the first century CE, orchards are seen outside the walls. The divide between aesthetic gardening and the "productive" act of growing food continued to increase, culminating in highly manicured gardens such as those at Versailles. The distinction of tending gardens that were decorative possessions of the wealthy, from the more menial tasks of cultivating food crops, paralleled socioeconomic class divisions, causing these two types of "gardening" to evolve along different paths.

By the early twentieth century, threats to wilderness areas due to land development

and other needs of growing populations brought about the desire to create protected natural zones like botanic gardens. Many of these are designed to blur the lines between the managed landscape with their boundaries and the actual natural world outside. Masuo surmised that, in part, this has also led to trends appealing to those who prefer "naturalistic" gardens. Similarly, global food production has developed into a network of agricultural corporations growing monocultures with chemical assistance, leading to a growing movement favoring a return to sustainable land management practices, which often have worldwide historical precedents to support their validity.

Act II dealt with the plants in our gardens which represent the characters in our stories. Gardeners are the ones who assign meanings to the plants they collect based on our own proclivities, labeling them desirable or not for their own gardens. Masuo cited *Welwitschia mirabilis* as an example, which is much-admired botanically, but was once labeled as "the ugliest plant in creation" when first introduced in European horticultural circles. Before photography, people had to rely on illustrated texts like Nehemiah Grew's *The Anatomy of Plants* (1682) to better "see" plants that they might be interested in. Beautifully rendered botanical illustrations like those of Georg Ehret (1700s) were very popular for scientific and aesthetic reference and may have piqued horticultural interest in plants that might otherwise remain obscure. Botanist Anna Atkins' 1843 self-published *Photographs of British Algae*, a collection of her cyanotypes, is considered to be the first book illustrated with photographs, and pioneered the use of photography in scientific illustration.

Masuo concluded with Act III, referencing the ephemeral nature of gardens, which we are forever trying to capture in pictures and words. She shared

images from the Huntington's collections to illustrate her point, including herbals, albums of private plant collections, Carl Linnaeus' *Systema Naturae*, and a gorgeous full-color rendering of a *Welwitschia* from an 1863 issue of *Curtis's Botanical Magazine* (still in publication today). Some of Masuo's fascinating selections from the Huntington library can be made available for viewing and many plants contained in their pages can be found throughout the gardens, bringing botanical history to life.

Go to www.huntington.org to learn more and find Masuo's posts on their Verso blog archive. Or just visit the Huntington!

✂ Sabine Steinmetz

Photo supplied by speaker.



Link here to watch the entire program on YouTube:

<https://www.youtube.com/watch?v=-IHZNjog9mY>

SCHS MONTHLY GARDEN SHARE

The December garden is winding down for its winter rest, so let's take it easy as well!

- Finish putting in new plantings, so healthy roots can establish ahead of spring's growth spurt.
- Late this month, start annual rose pruning and soil prep.
- Cut back on irrigation – we're due for another wet winter!
- Get on your tree trimmer's schedule for winter touch-ups.

MAY YOU RELAX IN YOUR GARDEN AS YOU WELCOME THE NEW YEAR!

✂ Sabine Steinmetz

2023 HOTY SILENT AUCTION DONORS & ACKNOWLEDGEMENTS

In last month's acknowledgements of work that went in to organizing the HOTY event, we did not have the full list of donors to our Silent Auction and were unable to properly thank members and community supporters for their contributions. The SCHS appreciates the generous participation of bidders and donors alike to this annual fundraising event.

We are grateful to all who donated to the 2023 auction.

(Donors listed in alphabetical order)

Businesses: Baker's Acres Nursery, Green Thumb Nursery, Growing Works Nursery, L.A. Arboretum, Soledad Nursery and

Theodore Payne Foundation. **Individuals:** Laura Bauer, Carol Bornstein, Dr. Raymond Borun, Mardi Caruso, Steven Gerischer, Laurel Jaramillo, Sandy Masuo, MaryAnn Moss, Kathy Musial, Yoav Paskowitz, Sabine Steinmetz, John Trager, Layla Valenzuela, the Dave Verity Estate and George Zhang.

Much appreciation also goes to the Arboretum for providing the venue, particularly Richard Schulhof (former CEO & 2023 HOTY), Michael Deplaines (current CEO), and Nadia Balaz, the Arboretum's Event Coordinator, as well as the staff of the Fresh Gourmet for catering our lovely dinner. You all helped make it a truly special evening...

Thank you all so very much!

DECEMBER HORTICULTURAL HAPPENINGS

Venues open at press time are marked  or  for those that are online only.

Organizations are offering events, both online and in person, but may have updated protocols in place. Please continue to check with your favorites for current info if you are planning a visit.

ARLINGTON GARDEN

275 Arlington Drive, Pasadena 91105
626-578-5434
www.arlingtongardenpasadena.com

CALIFORNIA BOTANIC GARDEN

(formerly RANCHO SANTA ANA)
1500 N. College Ave., Claremont 91711
909.625.8767 www.calbg.org

CALIFORNIA NATIVE PLANT SOCIETY

SAN GABRIEL MOUNTAINS CHAPTER
1750 N. Altadena Dr., Pasadena 91107
818.398.5420 www.cnps-sgm.org

CALIFORNIA NATIVE PLANT SOCIETY

L.A./Sta Monica Mtns Chapter / Sepulveda Garden Ctr
16633 Magnolia Blvd., Encino 91436
818-782-9346 www.lasmmcnps.org

DESCANSO GARDENS

1418 Descanso Drive, La Canada 91011
818.949.7980 www.descansogardens.org

EATON CANYON NATURE CENTER

1750 N. Altadena Dr., Pasadena 91107
626.398.5420 www.ecnca.org

FULLERTON ARBORETUM

1900 Associated Road, Fullerton 92831
657.278.3407 www.fullertonarboretum.org

HUNTINGTON BOTANICAL GARDENS

1151 Oxford Road, San Marino 91108
626.405.2100 www.huntington.org

LOS ANGELES COUNTY ARBORETUM

301 N. Baldwin Ave., Arcadia 91007
626.821.4623 www.arboretum.org

NATURAL HISTORY MUSEUM OF L.A.

900 Exposition Blvd., Los Angeles 90007
213.763.3466 www.nhm.org

RANCHO LOS ALAMITOS

6400 E. Bixby Hill Rd., Long Beach 90815
562.431.3541 www.rancholosalamitos.org

RANCHO LOS CERRITOS

4600 Virginia Road, Long Beach 90807
562.206.2040 www.rancholoscerritos.org

SAN DIEGO BOTANIC GARDEN

230 Quail Gardens Dr., Encinitas 92024
760.436.3036 www.sdbgarden.org

SOUTH COAST BOTANIC GARDEN

26300 Crenshaw Blvd., Palos Verdes 90274
310.544.1948
www.southcoastbotanicgarden.org

THEODORE PAYNE FOUNDATION

10459 Tuxford St., Sun Valley 91352
818.768.1802 www.theodorepayne.org

UC RIVERSIDE BOTANIC GARDENS

900 University Ave., Riverside 92521
951-784-6962 www.gardens.ucr.edu

 Yvonne Savio

See more events at: www.gardeninginla.net/submit-your-garden-events.

SCHS HOLIDAY PARTY THURSDAY, DECEMBER 14

Please join us for our annual holiday gathering
to celebrate with friends, food, gifts & plants!

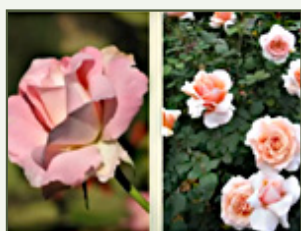
(Details on Page 1)

2019



Lore and Legends
of Christmas Greens

2020



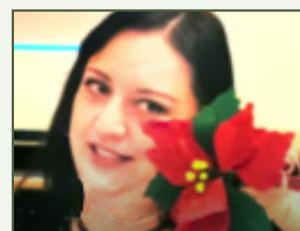
Growing Roses
Organically

2021



California Native
Plant Arrangements

2022



DIY: Crepe
Paper Flowers



Click on images to see videos of the seasonal presentations from the last few years!

In-person monthly meetings are held on the second Thursday of the month in the evening, **unless otherwise noted**. Address for live meetings is:

Friendship Auditorium

3201 Riverside Drive, Los Angeles CA 90027

NOTE: Online meetings are either recorded for YouTube or live-streamed for Zoom viewing (with pre-registration.)

Please visit www.socalhort.org for monthly schedule.

SCHS EVENTS CALENDAR

December 14 *IN PERSON*

ANNUAL HOLIDAY CELEBRATION featuring:

Eric Focht of UC Riverside will be presenting a talk on avocados, and members will have time to socialize, enjoy holiday snacks and look for treasures on our "freebie" table of garden give-aways!

PLEASE JOIN US FOR A FUN EVENING!

January 11 *IN PERSON*

Writer and journalist Naomi Hirahara will speak to us about the history of Japanese-American Gardeners and Nurseries in Southern California.

February 8 *ONLINE*

Program information being finalized and TBA soon!

GARDEN QUOTE OF THE MONTH



"Winter is not a season,
it's a celebration."

- Anamika Mishra

DECEMBER

SCHS BOARD & COMMITTEES

Laura Bauer - President, HOTY Committee, Finance Committee, RBLs Committee, Website Committee (Chair), Voicemail and Communications

Lili Singer - Vice President and Secretary, Fundraising Committee, HOTY Committee, Plant Forum Committee, RBLs Committee and Archives

Yoav Paskowitz - Treasurer, Finance Committee (Chair), Newsletter Copy Editor, Oral History Committee and Website Committee

Carol Aronson - Fundraising Committee, Program Committee, RBLs Committee and Special Events Committee

Carol Bornstein - RBLs Committee and Program Committee (Chair)

Mardi Caruso - Special Events Committee and Event Greeter

Aprille Curtis - Plant Forum Committee, Social Media Committee and Special Events Committee

Steven Gerischer - Fundraising Committee, HOTY Committee & Silent Auction Coordinator, Plant Forum Committee and Oral History Committee

Elizabeth Mendoza - Social Media Committee

Steven Ormenyi - Finance Committee and Internships

John Schoustra - Special Events Committee

Sabine Steinmetz - Garden Share, Graphic Design, Newsletter Editor and Website Committee

Layla Valenzuela - Fundraising Committee and Membership Coordinator

Jill Vig - Oral History Committee (Chair) and Special Events Committee



Southern California
Horticultural Society
P.O. Box 94476
Pasadena CA 91109-4476

Contact us via mail, phone or social media:

818-567-1496 • www.socalhort.org
www.facebook.com/socalhort
www.instagram.com/socalhort

SUBMISSIONS TO NEWSLETTER

You may contribute an article of interest or information to be considered for publication in future issues.

Next deadline (for January newsletter): Monday, December 18

Newsletter Editor: Sabine Steinmetz • Contributors to this issue: Yvonne Savio